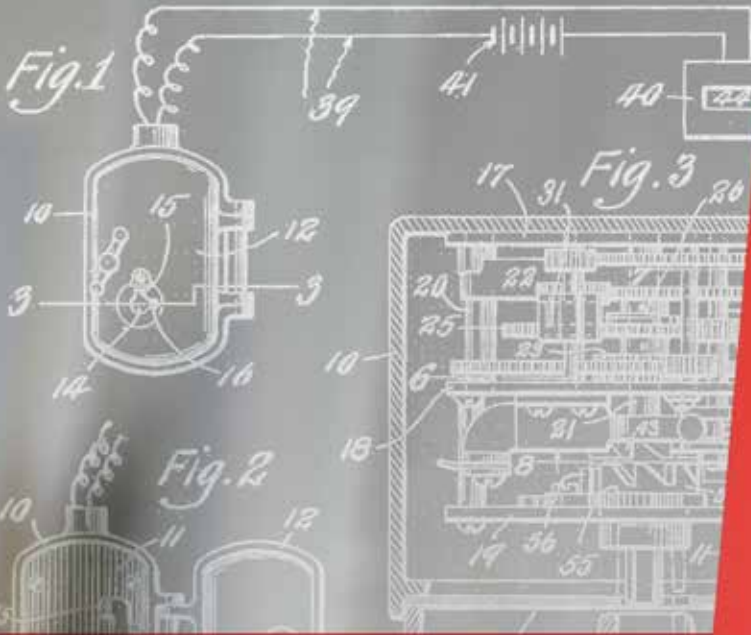


1,208,205.

C. E. POTTER.

Patented Dec. 12, 1916.



# Potter:

115 Years + of  
Innovation

**POTTER**  
*The Symbol of Protection*





PFC-6075  
Addressable Fire Alarm





**POTTER**  
*The Symbol of Protection*

Fire Alarm Systems

Addressable Fire Alarm Control Panels

			
<b>PFC-6800</b>	<b>PFC-6200</b>	<b>PFC-6075</b>	<b>PFC-6030</b>
127 up to 1,016 Points <sup>1</sup>	127 up to 254 Points <sup>1</sup>	75 Points	30 Points
6 NACs / 196 <sup>2</sup>	2 NACs / 190 <sup>2</sup>	2 NACs / 190 <sup>2</sup>	2 NACs / 188 <sup>2</sup>
10A Power / 320 <sup>2</sup>	5A Power / 315 <sup>2</sup>	5A Power / 315 <sup>2</sup>	3.5A Power / 313.5 <sup>2</sup>
4 I/O Circuits	2 I/O Circuits	2 I/O Circuits	-
160 Character LCD	160 Character LCD	32 Character LCD	32 Character LCD

Power Expanders

	
<b>PSN-1000(E)</b>	<b>PSN-64/106</b>
10A Power	10/6A Power
6 NACs	4/6 NACs
3A Each NAC	Quadrasync Support
Intelligent Power Supply	
(E) - Extra large cabinet for P-Link Expanders	

Voice Evacuation

	
<b>Conventional</b>	<b>Expandable</b>
25 - 2000W Systems	Nearly Unlimited Wattage
25 or 70.7 VRMS	Distributed Voice
Zone Splitting	Multiple Master Panels
Remote Microphones	6 Channel Audio
Remote Booster Panels	1,000 Messages
	Fire Fighter Telephone Capable

Conventional Fire Alarm Control Panels

			
<b>PFC-6006</b>	<b>PFC-5004E</b>	<b>PFC-5008</b>	<b>PFC-5008D</b>
6 Zones	4 Zones Expandable to 8	8 Zones	8 Zones
Built-in dual line DACT	4 Class B or 2 Class A Zones (Expandable to 8)	8 class B or 4 Class A Zones	8 class B or 4 Class A Zones
Sole Path IP Communicator	2 Class A/B NAC Circuits (Expandable to 4)	4 Class A/B NAC Circuits	4 Class A/B NAC Circuits
Email events & service reminders	5 amp power supply	5 amp power supply	5 amp power supply
Quadrasync Support			Built-in 2-Line Digital Communicator

P-Link Circuit

					
<b>FIB-1000</b>	<b>SPG-1000</b>	<b>FCB-1000</b>	<b>DRV-50</b>	<b>RLY-5</b>	<b>SLCE-127</b>
Fiber Interface Module	Serial Parallel Gateway	Fire Communication Bridge	LED Driver Expander	Relay Module Expander	SLC Loop Expander
					
<b>RA-6500</b>	<b>RA-6075</b>	<b>RA-6075</b>		<b>LED-16</b>	
160 Character LCD Remote Annunciator	32 Character LCD Remote Annunciator	32 Character LCD Remote Annunciator		LED Remote Annunciator	

SLC Devices

					
<b>AB-6</b>	<b>ASB</b>	<b>AIB</b>	<b>ARB</b>	<b>DDA</b>	<b>APS-SA/DA</b>
Detector Base	Analog Sounder Base	Analog Isolator Base	Analog Relay Base	Addressable Duct Detector	Addressable Pull Station
<b>PSA</b>	<b>PSHA</b>	<b>RHA</b>	<b>FHA</b>		
Smoke Detector	Smoke Detector / Heat Detector	Rate of Rise Heat Detector	Fixed Temperature Heat Detector		
					
<b>SCI</b>	<b>DCM-4</b>	<b>MOM-4</b>	<b>TRM-4</b>	<b>CIZM-4</b>	<b>SCM-4</b>
Short Circuit Isolator	Dual Contact Module	Monitored Output Module	Twin Relay Module	Conventional Initiating Zone Module	Single Contact Module
					
<b>MCM</b>					
Mini Contact Module					

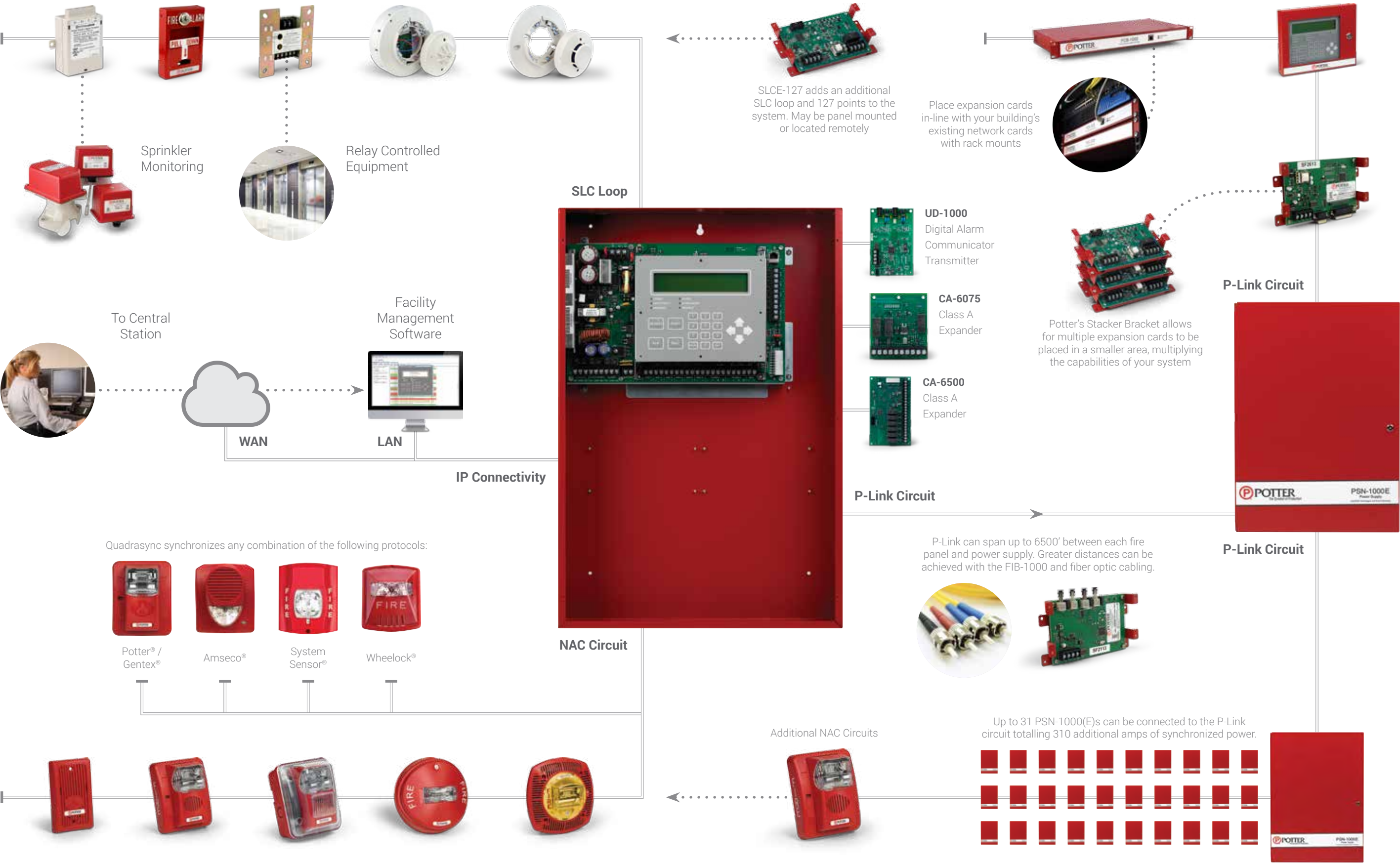
NAC Devices

					
<b>Mini Horns</b>	<b>Horns &amp; Strobes</b>	<b>Speakers &amp; Strobes</b>	<b>Weather Proof</b>	<b>Wall Mount</b>	<b>Ceiling Mount</b>

<sup>1</sup> With the addition of SLCE-127 expansion cards. PFC-6800 supports 7 total cards, PFC-6200 supports 1.

<sup>2</sup> Capacity with maximum of 31 PSN-1000(E) Intelligent Power Supplies.

# Fire Panel Connections





A better way to connect.

## IP Connectivity

With today's ever-expanding means of communication, it's important to be able to incorporate the same technology into your fire control system. We took this technology into account when we designed IP connectivity within our new panels.

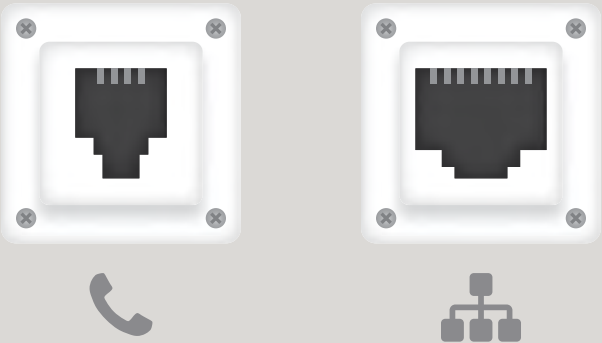
By eliminating the cost of phone lines, save big when using your building's existing network infrastructure. Additionally, the speed of IP

communication allows for event information to be sent to the central station within seconds.

Potter's PFC Series fire panels are NFPA 72 2013, 26.6.3.1.5 compliant and allow for a single path of communication over IP. The PFC Series line is also factory set to program for NFPA 72 2013 test time interval changes of 6 hours from 24 hours.

## Communication Options

Potter's PFC-6000 Series fire alarm control panels are capable of both IP and phone line communication to central station. The PFC-6006 Sprinkler Monitoring Panel complies with new NFPA 72 2013 code by providing both out of the box.



## Email & Reminders

The PFC-6000 Series panels are email ready. History and Detector Status reports can be sent on demand as either a text or Excel® file for a professional look. The status events of the panel can be immediately emailed allowing users to be proactive in servicing customers.

Reports and the configuration file can be requested from the panel at any time by sending an email directly to the panel. Additionally, enhance your business by creating email reminders for your customers to schedule system tests or even to purchase new batteries.



## Communication Over IP

The world of communication in fire alarm is changing. The installation of POTS lines is being replaced by more reliable and faster communicating IP connections to monitoring stations.

Every PFC-6000 Series fire panel has an on board IP communicator that is listed to communicate with the SurGard III IP receiver. The system allows for multiple communication paths without requiring additional expensive hardware and connections.







All your systems at the click of a mouse.

## Facility Management

Would you like to know what's happening on your Potter fire alarm control panels from a single location? Potter's Facility Management software is compatible with all Potter PFC-6000 Series fire panels and displays real-time events that occur on one or more panels connected via a LAN or WAN network connection.

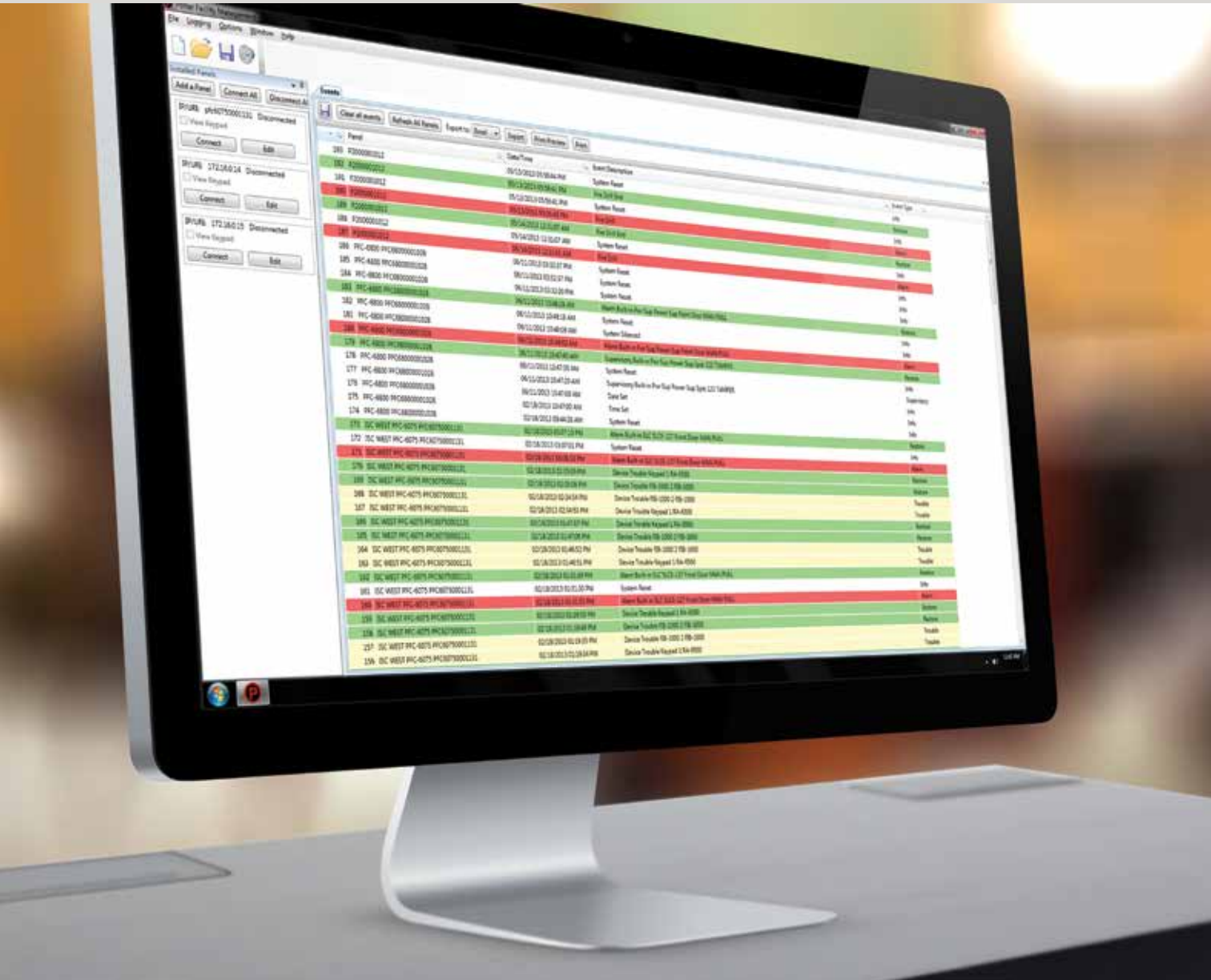
It offers great flexibility in how event information may be used to efficiently organize, manage and analyze panel performance. The Facility Management software allows the user to see alarm events, trouble conditions, and much more. Events can even be filtered to create custom data files which can be exported to Word® or Excel®.



## Free Download

For a limited time, receive Potter's Facility Management software absolutely free!

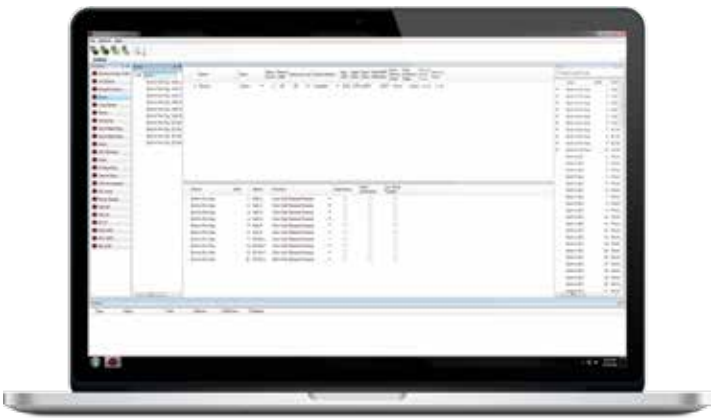
To learn more and to download, scan the QR code or visit:  
[www.pottersignal.com/FMtool](http://www.pottersignal.com/FMtool)



## Panel Programming

The PFC-6000 Series fire panels have the ability to connect to a Local or Wide Area Network (LAN or WAN) and obtain an IP address. Once connected, the panel configuration software allows custom programming and configuration for all points using the network or a stand-alone computer.

We have designed our programming software to be simple yet robust. At the click of a mouse, you can fine-tune device behavior characteristics or create mapping zones for a more sophisticated fire protection system. All this is bundled in an easy-to-use drag and drop interface.





Advanced topics made simple.

## Training Opportunities

Potter provides unmatched education and training opportunities on our full line of fire alarm systems. With multiple ways to receive training, you choose your preferred method. Webinars on panel hardware, software, and network/communications will bring you up to speed on our

industry-leading technology. Training videos are available to be completed on your time with optional factory certification. Additionally, live training seminars are provided for advanced training in the PFC series installation and programming.



## Get Training Today

Potter offers a variety of ways to receive training on our full line of fire alarm systems.

To get started, scan the QR code or visit:  
[www.pottersignal.com/training](http://www.pottersignal.com/training)



## Live Training

Potter's comprehensive two-day course covers the PFC Series fire panels and programming in depth. Each trainee will receive training on topics such as panel and device installation, SLC addressing, panel communication technologies (IP, Dialer, GSM), TCP/IP networking, email capabilities, and much more. Software examples include elevator recall, zone programming, user management, device sensitivity, and more.

Classes can be registered online with a variety of dates and locations. Each attendee will receive factory certification on the PFC-6030, 6075, 6200, and 6800 fire alarm control panels. Upon completion you will have the tools to successfully install, program and start-up a PFC Series fire alarm system.

## Webinars

Potter provides distance learning with a live trainer on a variety of topics. All webinars are completely free of charge and have multiple dates and times for anyone's schedule. Topics include PFC-6000 fire panels and software, PFC-8500 fire panels and software, network & IP communications, and ask the trainer sessions.

Hardware, software, and networking webinars last approximately 2 hours. Topics covered vary by class but may include panel connections and installation, keypad interface, programming, SLC addressing, software applications, and more.

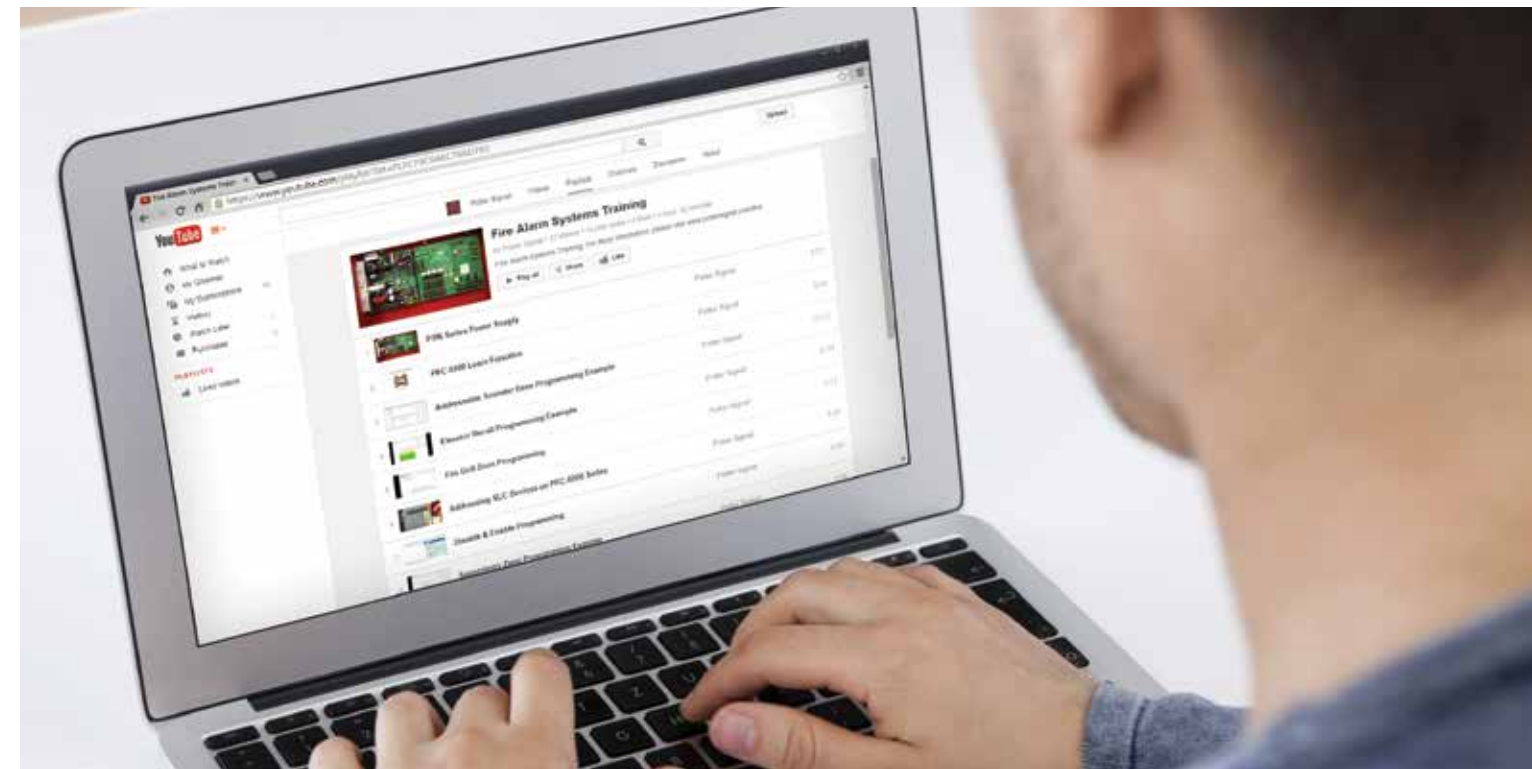
Ask the trainer sessions last approximately 30 minutes and allow attendees to participate in an interactive Q&A with a live trainer.

## Training Videos

In addition to live training and webinars, Potter also provides video training that can be completed on your own time, anytime. A wide range of training topics are available including PFC-Series system hardware and software.

## Online Certification

Potter offers online certification for the PFC-6000 Series fire alarm panels that can be completed on your time. A series of hardware and software video modules provides in-depth training on a variety of topics. Upon completion of the video training, a certification exam can be taken to receive PFC-6000 Certification.





Designed for any size job.

## Addressable Fire Alarm Control Panels



**PFC-6800**

127 up to 1,016 Points <sup>1</sup>  
6 NACs / **196** <sup>2</sup>  
10A Power / **320** <sup>2</sup>  
4 I/O Circuits  
160 Character LCD



**PFC-6200**

127 up to 254 Points <sup>1</sup>  
2 NACs / **190** <sup>2</sup>  
5A Power / **315** <sup>2</sup>  
2 I/O Circuits  
160 Character LCD



**PFC-6075**

75 Points  
2 NACs / **190** <sup>2</sup>  
5A Power / **315** <sup>2</sup>  
2 I/O Circuits  
32 Character LCD



**PFC-6030**

30 Points  
2 NACs / **188** <sup>2</sup>  
3.5A Power / **313.5** <sup>2</sup>  
-  
32 Character LCD

## Intelligent Power Expanders



**PSN-1000(E)**

10A Power  
6 NACs  
3A Each NAC  
Intelligent Power Supply  
Extra large cabinet for P-Link  
Expanders  
2 dry contact inputs



**PSN-1000**

10A Power  
6 NACs  
3A Each NAC  
Intelligent Power Supply

All PFC-6000 Series addressable fire alarm control panels include a built-in UL Listed sole path IP communicator for communication to primary central station.

<sup>1</sup> With the addition of SLCE-127 expansion cards. PFC-6800 supports 7 total cards, PFC-6200 supports 1.

<sup>2</sup> Capacity with maximum of 31 PSN-1000(E) Intelligent Power Supplies.

## Expansion Enclosures



Expand your Potter Fire System with the AE Series expansion enclosures. These accommodate up to 14 standard size P-Link stacker bracket expansion cards, boosting the capabilities of your system.

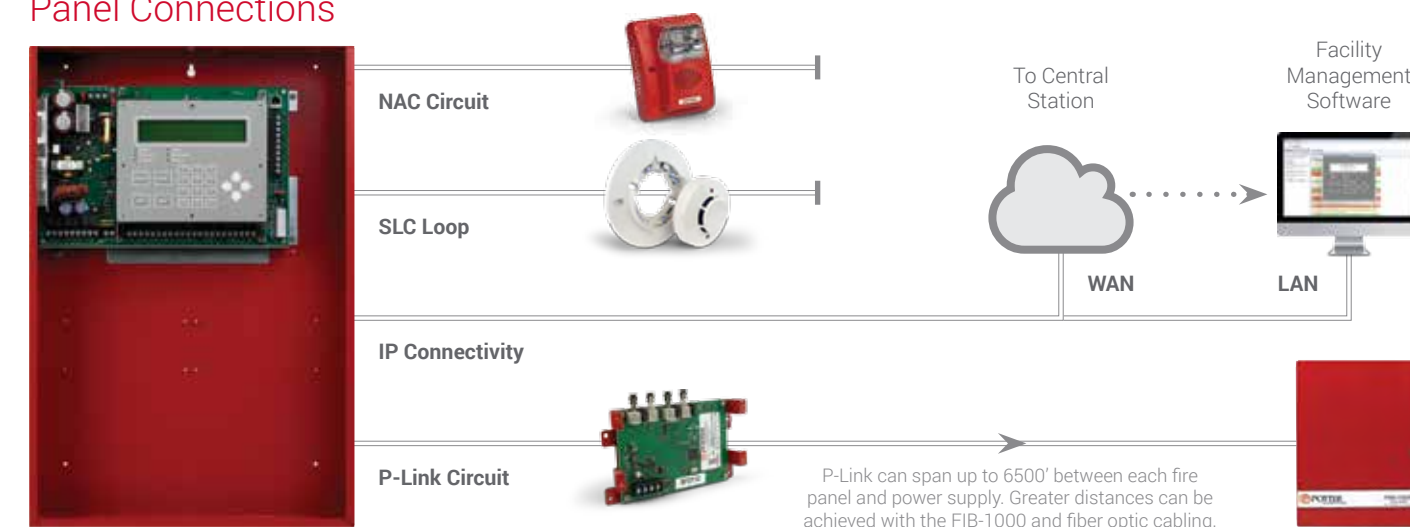
**AE-14** - 14 Card Enclosure  
**AE-8** - 8 Card Enclosure  
**AE-2** - 2 Card Enclosure

## Potter Fire Alarm Systems

Potter's addressable fire systems use state-of-the-art addressable sensors and control modules which utilize the robust Nohmi protocol to provide you the flexibility needed to tackle demanding applications. All of Potter's new addressable fire systems use the same devices to ensure a clear migration path as your systems grow in size and scope. In addition

to our full line of addressable devices, we've designed all of our audio visual devices for both ease of installation and robust functionality. Our efficient output devices allow you to take full advantage of the multiple NAC's available on each fire panel.

## Panel Connections





Capacity for any system.

## SLC Devices



**AB-6**  
Detector Base



**ASB**  
Analog Sounder Base



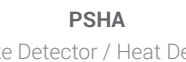
**AIB**  
Analog Isolator Base



**ARB**  
Analog Relay Base



**PSA**  
Smoke Detector



**PSHA**  
Smoke Detector / Heat Detector



**RHA**  
Rate of Rise Heat Detector



**FHA**  
Fixed Temperature Heat Detector



**SCI**  
Short Circuit Isolator



**DCM-4**  
Dual Contact Module



**MOM-4**  
Monitored Output Module



**TRM-4**  
Twin Relay Module



**CIZM-4**  
Conventional Initiating Zone Module



**SCM-4**  
Single Contact Module



**MCM**  
Miniature Contact Module



**APS-SA/DA**  
Addressable Pull Station



**DDA**  
Addressable Duct Detector

## Addressable Devices

Potter's addressable fire systems use state-of-the-art addressable sensors and control modules which utilize the robust Nohmi protocol to provide you the flexibility needed to tackle demanding applications. All of

Potter's new addressable fire systems use the same devices to ensure a clear migration path as your systems grow in size and scope.

## Robust System Capacity

From 30 addressable points to 1,016, Potter's PFC Series line of fire alarm control panels offer unmatched flexibility.



## SLC Expandability

With Potter's SLCE-127 on the P-Link circuit, your system can be expanded to an additional 127 addressable points per card. the PFC-6800 fire alarm control panel supports up to seven SLCE-127 cards for a total addressable point capacity of 1,016. The PFC-6200 fire alarm control panel supports one SLCE-127 cards for a total addressable point capacity of 254.



Expand your system's capabilities.

P-Link Circuit



**FIB-1000/RM**  
Fiber Interface Module  
(Optional rack mount enclosure)  
Connect up to 30 to each P-Link Circuit



**SPG-1000/RM**  
Serial Parallel Gateway  
(Optional rack mount enclosure)  
Connect up to 31 to each P-Link Circuit



**FCB-1000/RM**  
Fire Communication Bridge  
(Optional rack mount enclosure)  
Connect 1 to each P-Link Circuit



**DRV-50**  
LED Driver Expander  
Connect up to 31 to each PFC-6800, up to 10 on other P-Link configurations



**RLY-5**  
Relay Module Expander  
Connect up to 31 to each P-Link Circuit



**SLCE-127**  
SLC Loop Expander  
Connect up to 7 to each PFC-6800, up to 1 to each PFC-6200



**RA-6500**  
160 Character LCD Remote Annunciator  
Connect up to 31 to each P-Link Circuit



**RA-6075**  
32 Character LCD Remote Annunciator  
Connect up to 31 to each P-Link Circuit



**LED-16**  
LED Remote Annunciator



**RA-6500F**  
160 Character Flush Mount LCD Remote Annunciator  
Connect up to 31 to each P-Link Circuit



**LED-16F**  
Flush Mount LED Remote Annunciator



**UD-1000**  
Digital Alarm Communicator Transmitter



**CA-6075**  
Class A Expander



**CA-6500**  
Class A Expander

P-Link Circuit

The P-Link circuit is a 4-terminal connection that provides both power and data between fire alarm control panels, power expanders, and accessory devices in the field. Each P-Link connection is rated 1 amp at 24 volts and can span a maximum of 6500 feet between any P-Link

device. The PSN-1000(E) power expander acts as a P-Link repeater and can provide additional power and distance. Greater distances can also be achieved with the FIB-1000 fiber interface module and fiber optic cabling.



Potter Stacker Bracket

Potter's Stacker Bracket allows for multiple expansion cards to be placed in a smaller area, multiplying the capabilities of your system. The unique bracket design can be used in PFC Series fire alarm control panels, the PSN-1000E power expander, or Potter's AE Series accessory cabinets—ensuring expandability anywhere in your system design.



Annunciator Color Options

Choose between standard red, black, gray, or white housing options for your Potter annunciator to match the interior of your building.



Rack Mount Enclosures

Place expansion cards in-line with your building's existing network cards with rack mounts. The optional rack mount assembly is available for the FIB-1000 fiber interface module, SPG-1000 serial parallel gateway, and FCB-1000 fire communication bridge.



Expansion Enclosures

Expand your Potter Fire System with the AE Series expansion enclosures. These accommodate up to 14 standard size P-Link stacker bracket expansion cards, boosting the capabilities of your system.

- AE-14** - 14 Card Enclosure
- AE-8** - 8 Card Enclosure
- AE-2** - 2 Card Enclosure

We speak your language.

## Notification Appliances



MHT Series Mini Horns



HS/S Series Horns & Strobes



FASPKR/SPKSTR Series Speakers & Strobes



Wall Mount Devices



Ceiling Mount Devices



C Series Colored Lens Devices



WP Series Weather Proof Devices



PBA/MBA Series Bells



Low Frequency Devices

## Quadrasync

Our patented Quadrasync technology allows four different brands of strobes to be synced together using one PFC-6000 Series fire panel or PSN Series power supply. There is no need for the panel and devices

to utilize the same protocol, making this technology a great feature for retrofit applications. Quadrasync works with the Potter®/Gentex®, Amseco®, System Sensor®, and Wheelock® protocols.



NAC Circuits



Potter® / Gentex®



Amseco®



System Sensor®



Wheelock®



Please see our CPG brand of notification appliances including explosion proof and amplified speakers.







# Complete Releasing Systems.

## Releasing Fire Alarm Control Panels



**PFC-6075R**

75 Addressable Points  
2 NACs / 190<sup>2</sup>  
5A Power / 315<sup>2</sup>  
2 I/O Circuits  
32 Character LCD



**PFC-4410RC**

Conventional Releasing Panel  
4 Class B Initiating Circuits  
2 Class B Supervisory Circuits  
4 Class B Output Circuits  
Programmable Cross Zoning

## Releasing Panel Accessories



**RA-6500R**

160 Character LCD Remote  
Annunciator with Releasing



**RA-6075R**

32 Character LCD Remote  
Annunciator with Releasing



**RA-4410RC**

Remote Annunciator for the  
PFC-4410RC Releasing Panel

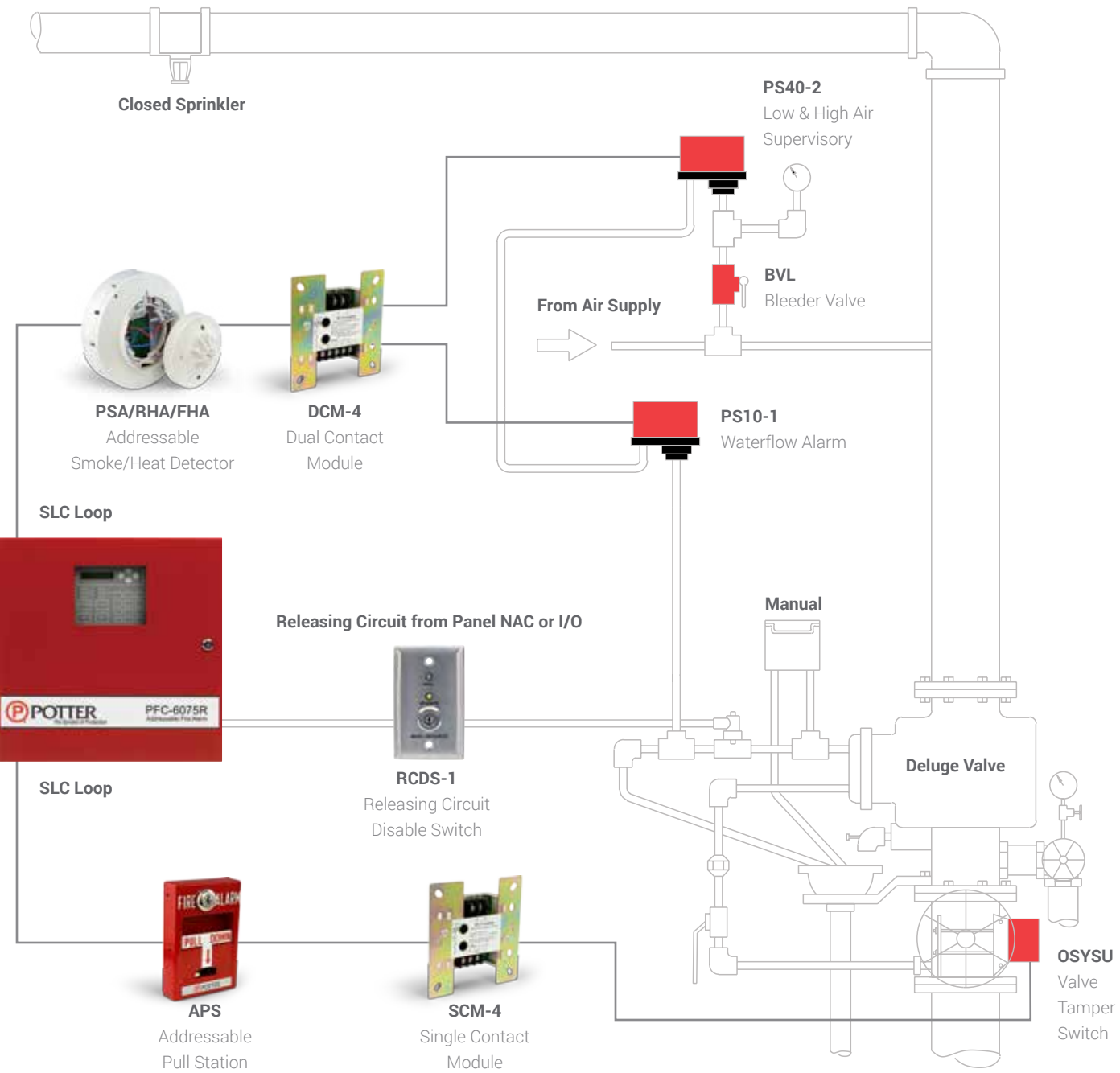


**Switches & Modules**



## Compatible Releasing Devices

Potter offers a large variety of devices compatible with our releasing panels. To view a list of compatible water control valves, solenoids, and agent releasing systems, please scan the QR code or visit:  
[www.pottersignal.com/releasing-devices](http://www.pottersignal.com/releasing-devices)



Simple and easy power solutions.

## Conventional Power Supplies



### PSN-106

10A Power  
6 NACs  
3A Each NAC  
Red Cabinet



### PSN-64

6A Power  
4 NACs  
3A Each NAC  
Red Cabinet



### PSN-106B

10A Power  
6 NACs  
3A Each NAC  
Black Cabinet

EOL Reference Feature  
Quadrasync strobe synchronization  
Latching diagnostic LEDs  
Pass through mode  
Dip switch programming  
1 AUX Power/Door Holder Circuit

### Quadrasync Strobe Synchronization

Quadrasync synchronizes any combination of Potter®/Gentex®, Amseco®, System Sensor®, and Wheelock® strobes.



### NAC Circuits



Potter® / Gentex®



Amseco®



System Sensor®

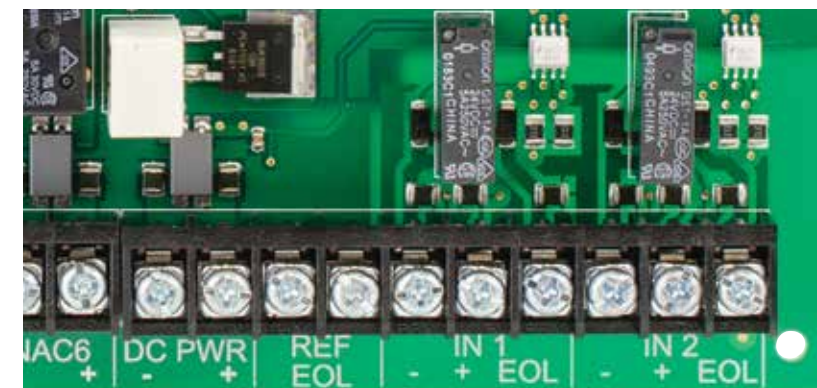


Wheelock®

## PSN Series

The PSN series of notification power supplies offers reliable notification power with unprecedented versatility. The power supplies offer either 6 or 10 amps of continuous power through 4 or 6 outputs respectively.

Each output is rated at 3 amps and it may be used continuously without any derating.



## Reference EOL

The PSN Series power supplies use a standard 5.1k end of line resistor. Any end of line value between 2k and 27k can be used in retrofit applications where a value other than 5.1k is installed. All NAC wiring will then be supervised based on the existing value. The Reference EOL terminals on the PSN Series power supplies can save considerable time in these situations by avoiding hunting for the EOL resistor.

## Diagnostic LEDs

Each NAC has an indicator LED which provides two functions. The primary function is to follow the pattern that its NAC is programmed to output. The secondary function is to provide trouble indication alerting the installer as to which NAC is in trouble. This allows for quick and accurate troubleshooting. Each LED has trouble memory which can save considerable trouble shooting time when trying to identify a circuit with an intermittent problem.





# Conventional Fire Alarm Solutions.

## Conventional Fire Alarm Control Panels



**PFC-6006**

- 6 Zones
- Built-in dual line DACT
- Sole Path IP Communicator
- Email events & service reminders
- Quadrasync strobe synchronization



**PFC-5004E**

- 4 Zones Expandable to 8
- 4 Class B or 2 Class A Zones (Expandable to 8)
- 2 Class A/B NAC Circuits (Expandable to 4)
- 5 amp Power Supply



**PFC-5008**

- 8 Zones
- 8 Class B or 4 Class A Zones
- 4 Class A/B NAC Circuits
- 5 amp Power Supply



**PFC-5008D**

- 8 Zones
- 8 Class B or 4 Class A Zones
- 4 Class A/B NAC Circuits
- 5 amp Power Supply
- Built-in 2-Line Digital Communicator

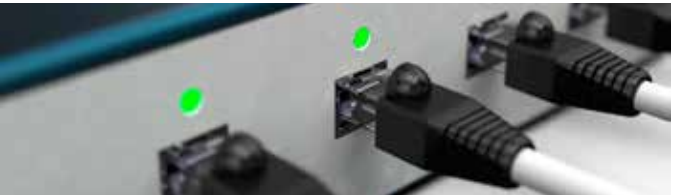
## Sprinkler Monitoring Panel

Panels designed for sprinkler monitoring applications are virtually nonexistent. DACT only dialers are severely limited and a traditional fire alarm panel with a DACT is overkill and costly. With its built-in dual line DACT and sole path IP communicator, Potter's new PFC-6006 Sprinkler

Monitoring Panel is ideally suited to cost effectively monitor a fire sprinkler system. Potter fire sprinkler monitoring devices are available through distribution.

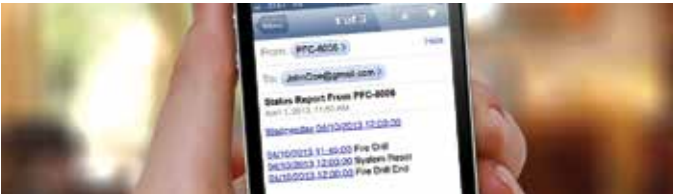
## NFPA 72 2013 Compliance

NFPA 72 2013, 26.6.3.2.1.4 states that a second phone line is no longer an acceptable backup means of communication. The PFC-6006 complies with this code with both IP communication and a dual-line DACT included!



## Email Capabilities

Email notification, event history, and even configuration files can be sent from the panel to 20 separate email addresses! Additionally, enhance your business by creating email reminders for your customers to schedule system tests or even to purchase new batteries.



**Conventional Fire Panel Accessories**



**Conventional Detectors**



**Conventional Bases**



**Conventional Fire Pull Stations**



**Special Application Fire Pull Stations**



**Beam Detectors**



**Conventional Duct Detectors**



**Explosion Proof Devices**





From big to small, we cover it all.

## Voice Evacuation



### PVC Series

High Rise Evacuation System

Distributed amplifier panels from 25-200 Watts

8 speaker circuits per panel

Fire fighter phone options available



### PVX Series

25-200 watt conventional voice system

4-16 speaker circuits expandable

Mass notification listed options



### PVC-WS

Warden Station



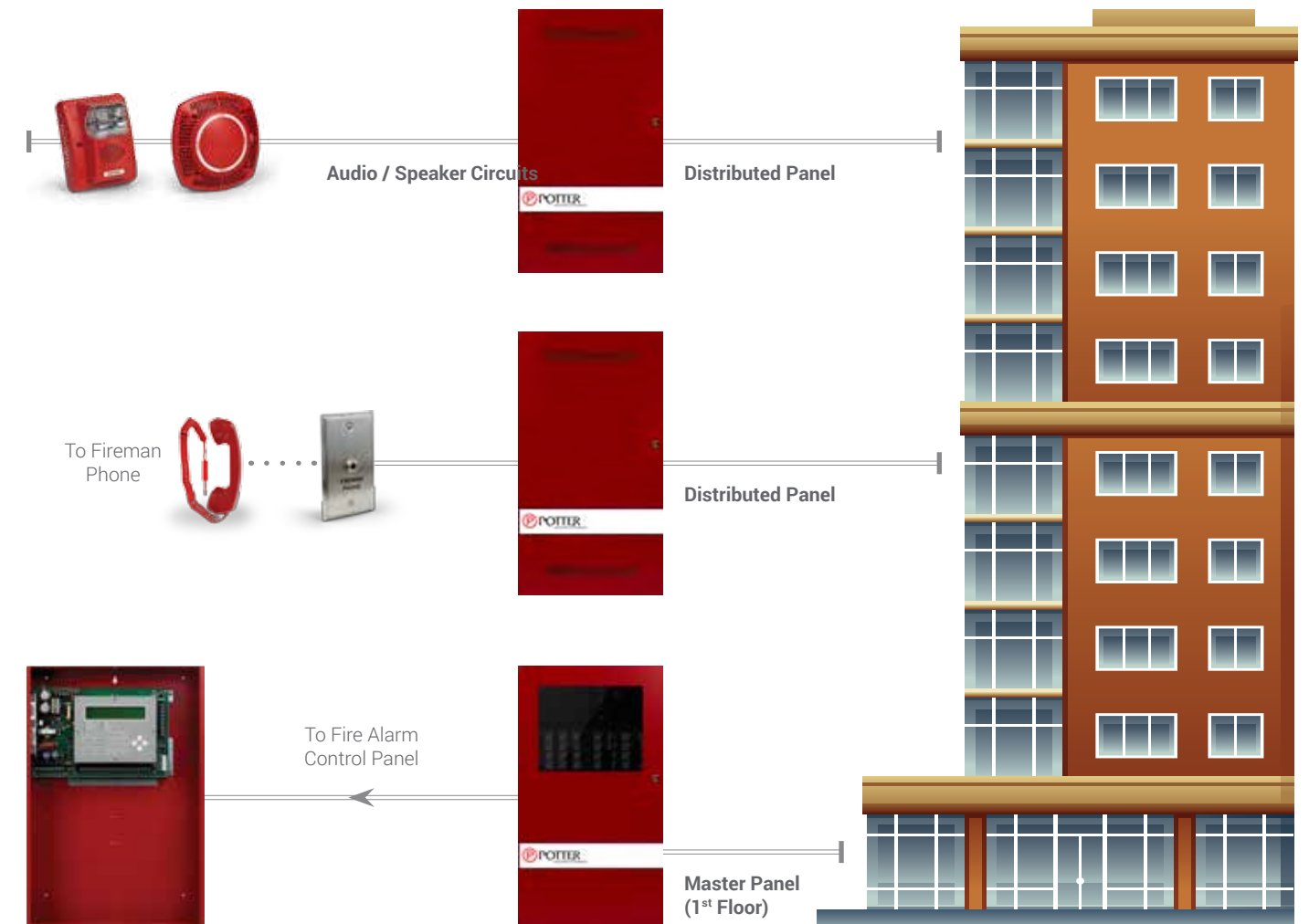
### PVC-FH

Portable Handset



### PVC-FJ

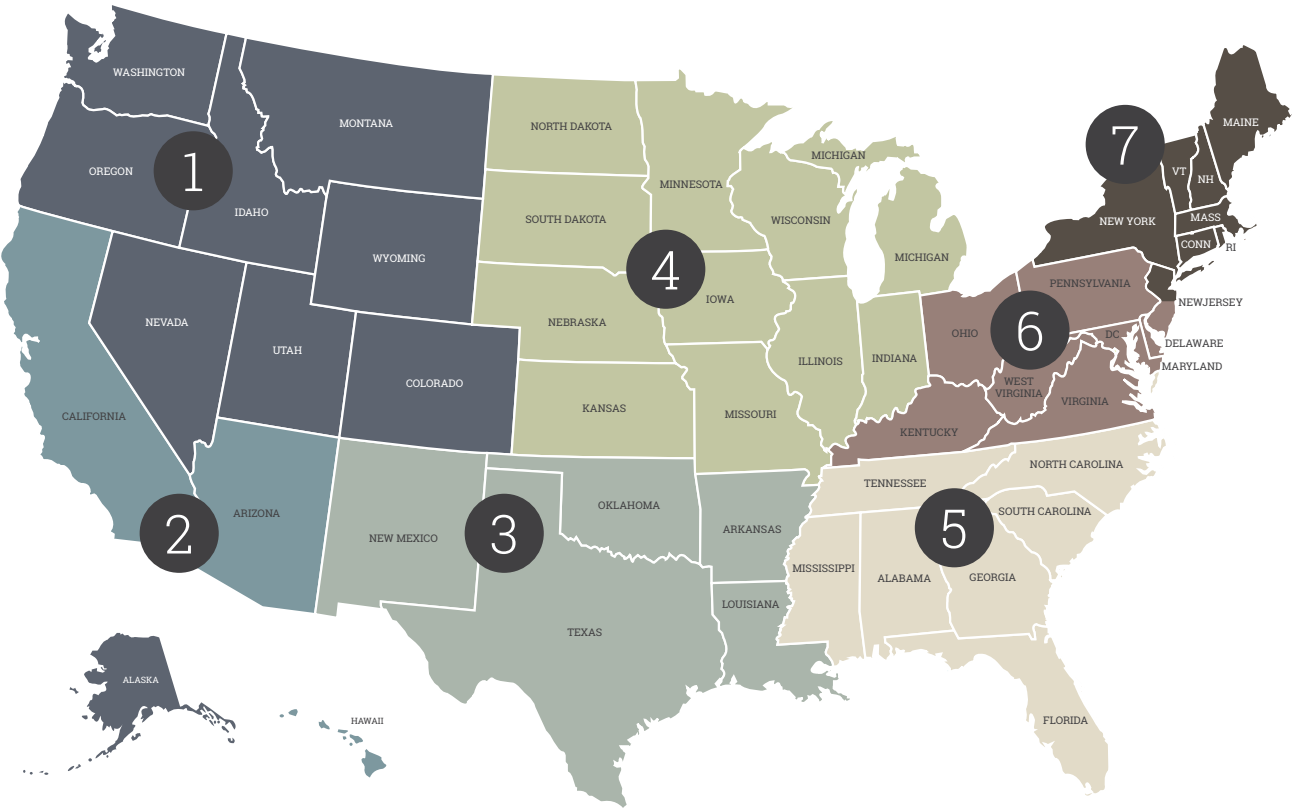
Fireman Phone Jack



Please see our EVAX brand of products for additional voice evacuation options including mass notification listed systems.



Fire Alarm Systems Sales Team



1

**Northwest**  
**Bart Maltby**  
360-818-1172 (Cell)  
bartm@pottersignal.com

2

**West, OEM Manager**  
**Mark Sandler**  
847-254-5108 (Cell)  
msandler@pottersignal.com

3

**South Central**  
**Gary Daw**  
281-710-3822 (Cell)  
garyd@pottersignal.com

4

**Midwest**  
**Matt Lears**  
314-409-7731 (Cell)  
mattl@pottersignal.com

5

**Southeast**  
**Pat Hudgins**  
704-526-6890 (Cell)  
path@pottersignal.com

6

**Mid Atlantic**  
**Kevin Magoon**  
860-348-6419 (Cell)  
kevinm@pottersignal.com

7

**Northeast**  
**Randy Zornberg**  
631-759-6770 (Cell)  
randyz@pottersignal.com

Vice President of Sales  
Fire & Security Division  
**Craig Summers**  
509-944-1380 (Cell)  
craigs@pottersignal.com

Customer Support  
**Tech Support**  
866-956-1211  
tech@pottersignal.com  
**Customer Service**  
866-240-1870  
orders@pottersignal.com

Potter PFC-6000 Series Comparison Charts\*

Features	Potter PFC-6200	Fire-Lite MS-9200	Silent Knight 5808	Potter PFC-6800	Fire-Lite 9600	Silent Knight 5820XL
Addressable SLCs	2 (Class A or B)	1 (Class A or B)	1 (Class A or B)	8 (Class A or B)	2 (Class A or B)	4 (Class A or B)
SLC Points	254	198 <sup>6</sup>	127/198 <sup>3</sup>	1,016	636	508
Max SLC Loop Distance	10,000 feet	10,000 feet	10,000 feet	10,000 feet	10,000 feet	10,000 feet
SLC Protocol	Potter®/Nohmi® <sup>7</sup>	Fire-Lite®	Hochiki®/SK <sup>3</sup>	Potter®/Nohmi® <sup>7</sup>	System Sensor®	System Sensor®/Hochiki®
NAC Power Supply (Amps)	5	2.5	6	10	7	6
# of NACs	2 Class A, 4 Class B	4 Class B	2 Class A, 4 Class B	6 Class A/B, 4 Class B	2 Class A, 4 Class B	6 Class A/B
NAC Circuit Rating	3 amps each	2.5 amp each	3 amp each	3 amps each, I/O 1 amp each	3 amps each	3 amps each
On-Board Programmable I/O	2	0	0	4	0	5
E-mailing Capabilities <sup>5</sup>	Built-In	No	No	Built-In	No	No
IP Communicator	Included	Optional	Optional	Included	Optional	Optional
On-board Alarm, Supervisory, & Trouble Relays	3	Yes	Yes	3	1 Trouble, 1 Programmable	3 Programmable
Digital Alarm Communicator	Optional	Built-in	Built-in	Optional	Optional	Built-in
Reporting Protocol	General, Zone, Point	Point or Zone	Point or Zone	General, Zone, Point	Point or Zone	Point or Zone
Remote Upload/Download	Yes	Yes	Yes	Yes	Yes	Yes
History Buffer	1,000	1,000	500	1,000	1,000	1,000
Sync Capabilities	Quadrasync <sup>1</sup>	Selectable <sup>2</sup>	Selectable <sup>2</sup>	Quadrasync <sup>1</sup>	Selectable <sup>2</sup>	Selectable <sup>2</sup>
Auto Programming	Yes	Yes	Yes	Yes	Yes	Yes
Auto Programming finds/adds/deletes/device-type changes without affecting installed program	Yes	Finds/Adds Only	No	Yes	Finds/Adds Only	No
Programming Zones	99	99	125	1,500	99	125
Programming Port Cable	Standard Ethernet	USB	Serial or USB	Standard Ethernet	PS-2 Keyboard	Serial Cable
Annunciators	31	32	8	31	8	8
Battery Size in cabinet (x2)	18	18	18	18	18	18
Battery Charging Capability	55	18	35	55	26	35

Features	Potter PFC-6030 / Potter PFC-6075	Fire-Lite MS-25 / Fire-Lite MS-9050	Silent Knight 5600 / Silent Knight 5700
Addressable SLCs	1 (Class A or B)	1 (Class B) / 1 (Class A or B)	1 (Class B) / 1 (Class A or B)
SLC Points	30 / 75	25 / 50	25 / 50/100 <sup>3</sup>
Max SLC Loop Distance	10,000 feet	10,000 feet	10,000 feet
SLC Protocol	Potter® / Nohmi® <sup>7</sup>	Honeywell® / Fire-Lite®	Honeywell® / Hochiki®, SK <sup>3</sup>
Power Supply (Amps)	3.5 / 5	2 / 2.5	2 / 2.5
# of NAC	2 Class A or 2 Class B / 2 Class A or 4 Class B <sup>4</sup>	2 Class B / 2 Class A or 2 Class B	2 Class B / 1 Class A or 2 Class B
NAC Circuit Rating	3 amps each	2 amps each / 2.5 amps each	2 amps each / 2.5 amps each
Emailing Capabilities <sup>5</sup>	Built-in	No	No
IP Communicator	Included	Optional	Optional
On-board Programmable I/O	0 / 2 <sup>1</sup>	0	0
On-board Alarm, Supervisory, & Trouble Relays	Yes	Yes	Yes
Dialer	Optional	Built-in	Built-in
Reporting Protocol	Point or Zone	Zone / Point or Zone	Zone / Point or Zone
Remote Upload/Download	Yes w/Dialer	Yes	Yes
History Buffer	1,000	None / 500	None / 500
Sync Capabilities	QuadraSync <sup>1</sup>	Selectable <sup>2</sup>	Selectable <sup>2</sup>
Auto Programming	Yes	Yes	Yes
Auto Programming finds/adds/deletes/device-type changes without affecting installed program	Yes	No / Finds Adds Only	No
Programming Zones	99	5 / 20	5 / 125
Programming Port Cable	Standard Ethernet	Standard Ethernet / Serial	Standard Ethernet / Serial or USB
Annunciators	31	0 / 8	0 / 8
Battery Size in Cabinet (x2)	18	7 / 18	7
Battery Charging Capability	55	33 / 18	33 / 35

1. QuadraSync allows user to set each NAC circuit to a different sync protocol and maintain system wide sync. (Potter/Amseco®, Wheelock®, Gentex®, System Sensor®)
2. Selectable allows user to set sync protocol for all NAC outputs (Potter/Amseco®, Gentex®, Wheelock®, System Sensor®) MS-9200 does not include Potter/Amseco Sync.
3. Panel accepts multiple protocols. Smaller number refers to Hochiki protocol and larger number refers to SK protocol
4. I/O circuits can be programmed as NAC, AUX PWR, Contact Input, City Tie, Reverse Polarity. If programmed as NAC the PFC-6075 can have a total of 4 Class B NACs.
5. Emailing Capabilities: panel has built-in email functionality to notify user-defined email addresses of events occurring at the panel. Scheduled reports can be emailed from panel, and reports can be requested from the panel on-demand.
6. The total of 198 is made up of a maximum of 99 detectors and 99 modules each.
7. Same SLC protocol devices are used on all Potter panels.

\*Content based on available published information.

At Potter Electric Signal Company,

QUALITY is the first order of business. Since 1898, we have served the fire and security industries on a worldwide basis. Today, we produce a wide array of products including the most innovative IP-based fire alarm control systems and monitoring devices. At Potter, we supply our customers with products that provide real world solutions for their unique needs and strive to provide them unequalled service and technical support.



Potter Electric Signal Company, LLC  
5757 Phantom Drive, Suite 125  
St. Louis, MO 63042

Office Hours:  
Monday - Friday  
8:00 am - 5:00 pm, CST

☎ 800-325-3936

✉ [sales@pottersignal.com](mailto:sales@pottersignal.com)

🌐 [www.pottersignal.com](http://www.pottersignal.com)